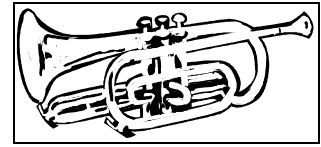


# THE ANNUAL MILLBRAE SCHOOL DISTRICT MUSIC PLAY-A-THON



**Date: Friday, March 25, 2011**  
**Location: Taylor Middle School Auditorium**  
**Time: 4:30 pm – 7:00 pm**  
**(Pizza Snack starts at 3:45 pm!)**

The annual music Play-a-thon is an extremely important fundraiser for all of our music programs in the Millbrae elementary schools, and at Taylor Middle School. This fundraiser supports our many music activities. In part, the funds raised helps with:

- Repair and purchase of school instruments
- Purchase of essential music equipment at each school (stands, microphones, etc.)
- Buses for the Concert Tour
- Photocopies of music and communications/flyers

The Play-a-thon also:

- Gives music students the opportunity to enhance and improve their playing music
- Allows the students a chance to perform with musicians from other schools
- Gives students a chance to get involved in helping support the Millbrae Music Program

## THE FOLLOWING IS WHAT MUSIC STUDENTS AND THEIR FAMILIES NEED TO DO:

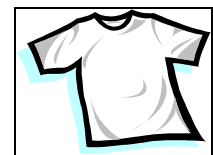
The Play-a-thon is essentially a big rehearsal in which students play approximately 20 pieces of music.

Before the Play-a-thon:

- 1) Ask family and friends to sponsor the student. Tell family and friends how important this fundraiser is. Play your instrument for them to encourage a donation. Play a song over the phone if family members live out of town.
- 2) Write down the pledges on the attached Pledge Sheet (minimum of \$1.00 per piece – 20 pieces will be played). Family and friends can pledge per music piece, or they can make a lump sum donation in any amount.
- 3) Neatly fill out the information on the Pledge Sheet.
- 4) The student is expected to collect the donated money in advance of the Play-a-thon. (This is a **huge** benefit to our volunteer parents, music teachers, and music students.)
- 5) Place money &/or checks in the envelope provided. Write the student's name & school name on the envelope.
- 6) Staple the envelope to the pledge form(s), and turn it all in at the Play-a-thon. (See more details below.)
- 5) Have fun!!!

## WHAT PLAY-A-THON MUSIC STUDENTS SHOULD WEAR:

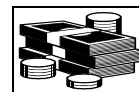
Red Millbrae Music "ROCKS" tee or sweatshirt and jeans



## DETAILS FOR TURNING IN PLEDGE FORMS & MONEY:

Follow the above instructions. Then, **BRING PLEDGE SHEET(S) AND MONEY** (cash or checks) **WITH YOU TO THE PLAY-A-THON**. Your papers and donations will be collected by parent volunteers at Taylor Middle School.

Make all checks payable to: Taylor Middle School / Music





**Please note: It is important that Play-a-thon donations be submitted and collected on the day of the Play-a-thon, and not afterwards if at all possible.** As noted, receiving donations at the Play-a-thon helps our volunteers by avoiding extra paper work & reminders. Plus, there are incentive prizes for the students who turn in all donations on the day of the Play-a-thon. Donations sent in later should be given to Mr. McGaw at music sessions at school.

**FAMILY AND FRIENDS ARE WELCOMED AND ENCOURAGED TO LISTEN FROM THE TAYLOR AUDITORIUM BALCONY! PLEASE REMEMBER THAT THIS EVENT IS CONSIDERED A REHEARSAL, AND NOT A PERFORMANCE.**

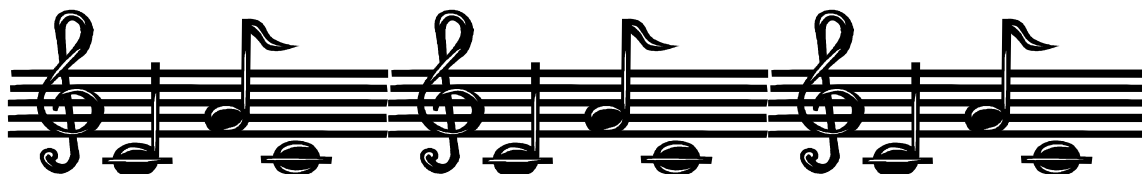
#### Prize Drawing

For every \$25 in donations your student turns in **AT THE PLAY-A-THON.** , they will be given a raffle ticket that will be entered into our prize drawing.

Prizes include Giants Bobbleheads, gift cards (i.e. iTunes, Target, etc.) and more.

The student who turns in the most donations will receive a \$50 gift card to the retailer of their choice.

**THANK YOU FOR YOUR SUPPORT OF OUR MILLBRAE SCHOOL DISTRICT MUSIC PROGRAM!**



***AS A REMINDER: We need several parents to help during the day of the Play-a-thon, and possibly with paperwork the following week. Please sign up on the volunteer form if you can help out!***

**To ensure that we order enough pizza for Play-a-thon participants, we would ask that you RSVP to us at [millbraemusicinfo@gmail.com](mailto:millbraemusicinfo@gmail.com) by Tuesday, March 22nd**

