



Assessment and Accountability Reports 2009

Millbrae School District Results:

**Standardized Testing and Reporting (STAR)
Adequate Yearly Progress (AYP)
Physical Fitness Test (PFT)**



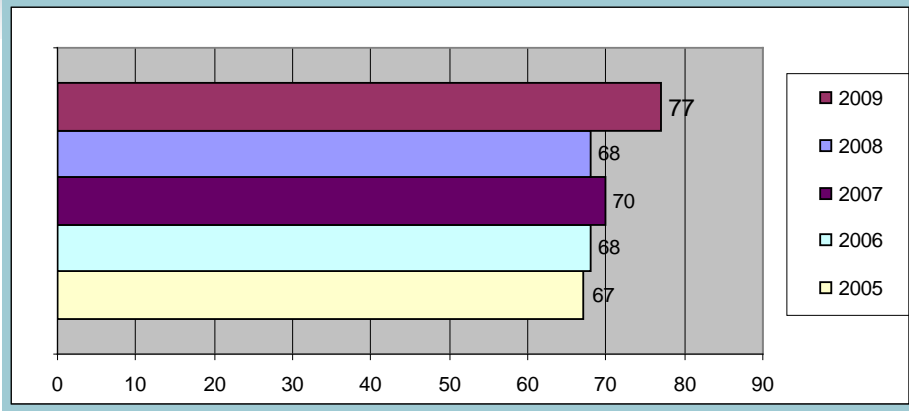
STAR Test Results

CST or California Standards Test is a criterion referenced test showing student progress in achieving State learning expectations.

Comparisons:

- Multiple year summary for Millbrae School District CST, 2005-2009
- Comparison of San Mateo County and California state results, 2009

Grade 4



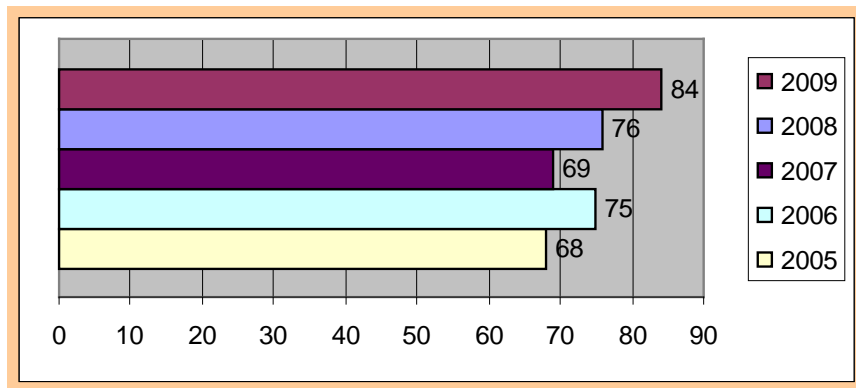
English Language Arts 2009

Millbrae Schools = 77%

Countywide = 69%

State wide = 61%

Math 2009

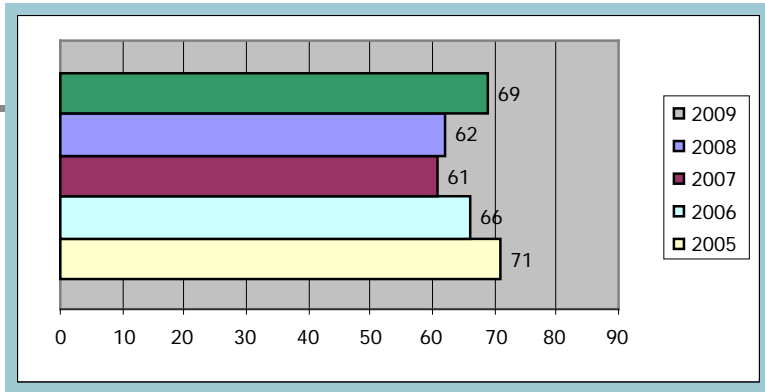


Millbrae Schools = 84%

Countywide = 70%

State wide = 66%

Grade 6

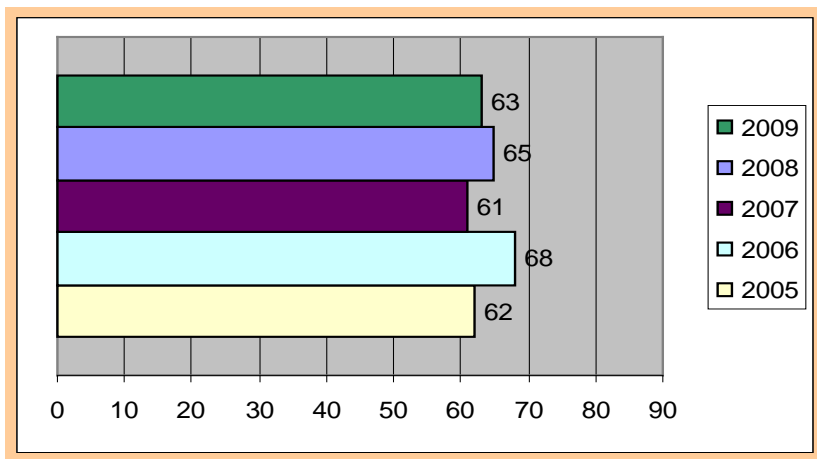


English Language Arts 2009

Millbrae Schools = 69%

Countywide = 61%

State wide = 52%



Math 2009

Millbrae Schools = 63%*

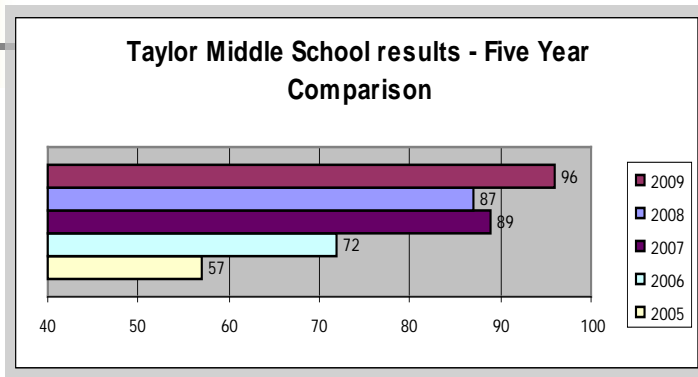
Countywide = 55%

State wide = 49%

The results are a 6th grade comparison.

Taylor Middle School Math

Algebra I



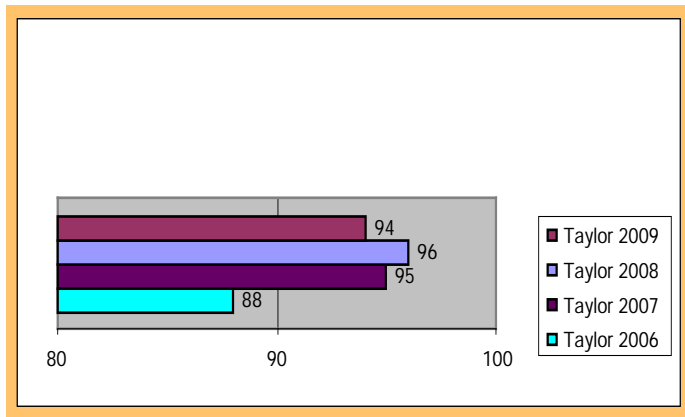
2009: 7th – 8th grade

Millbrae Schools = 96% - 68%

Countywide = 97% - 54%

State wide = 81% - 44%

Geometry



2009: 8th grade

Millbrae Schools = 94%

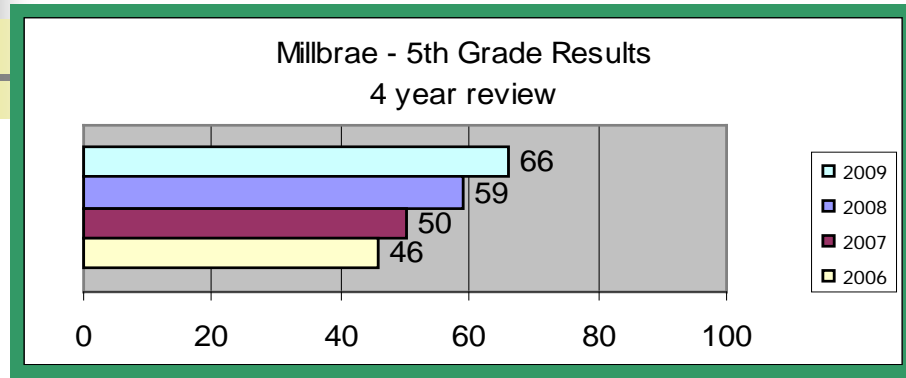
Countywide = 93%

State wide = 87%

CST - Science

Science – Comparison to County and State

5th grade - 2009



Millbrae Schools = 66%

Countywide = 59%

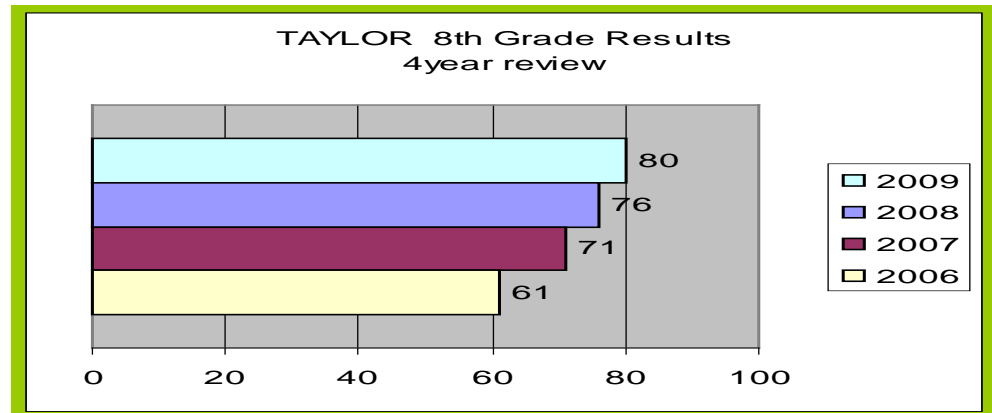
State wide = 49%

8th grade – 2009

Millbrae Schools = 80%

Countywide = 62%

State wide = 56 %



CST – History- Social Science

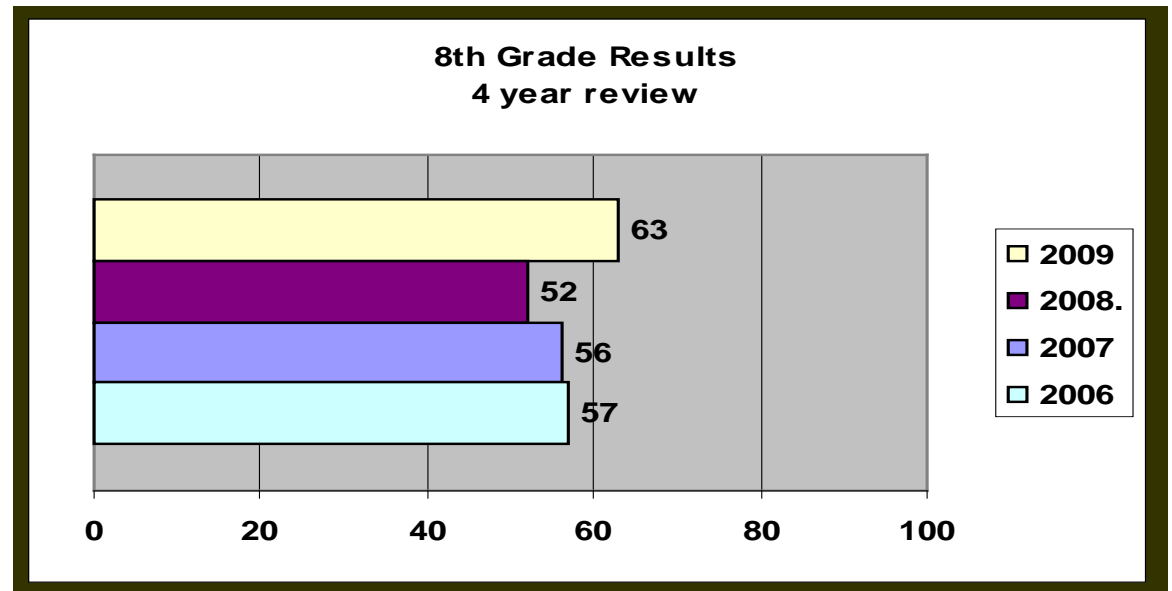
Comparison of Millbrae, San Mateo County and State results:

8th grade – 2009

Millbrae Schools = 63%

Countywide = 50%

State wide = 42 %



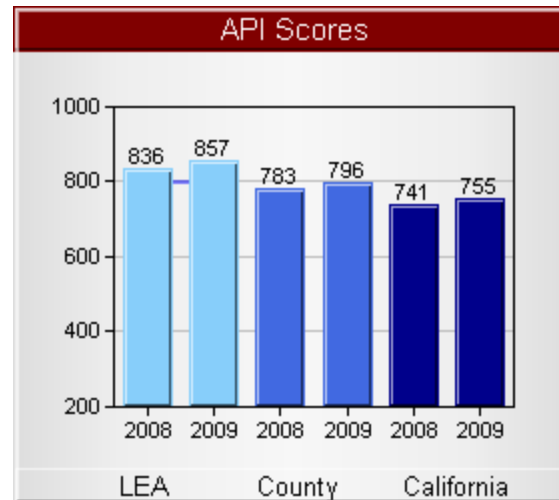
Annual Progress Reports

APR

Annual Performance Index – API

State Measure

- Millbrae 857 (09) 836 (08) + 21 points



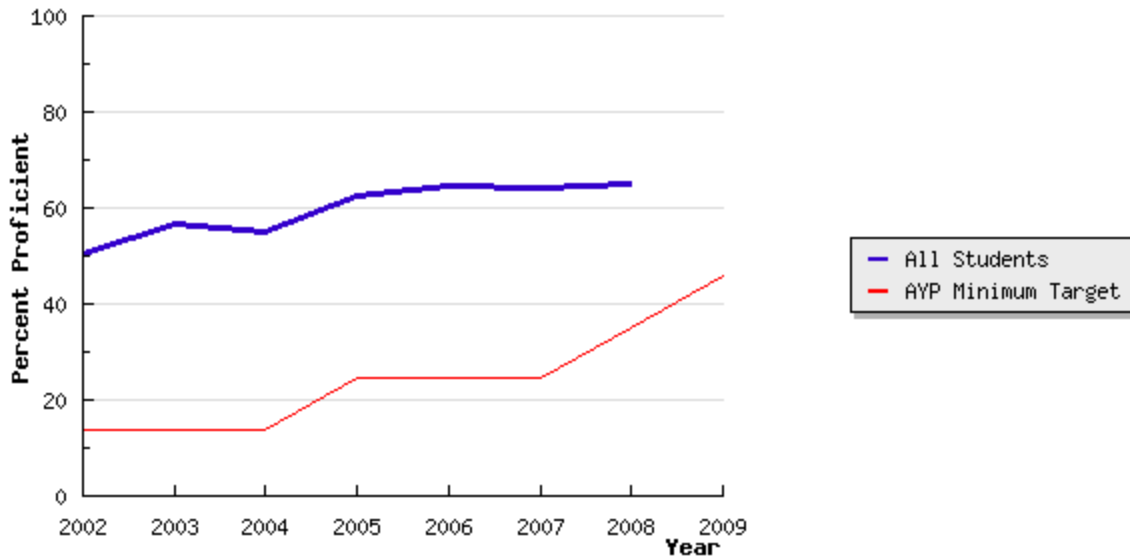
AYP Annual Yearly Progress Requirements for 2008-2009

Type of School or LEA	Requirement 1 Participation Rate	Requirement 2 Percent Proficient	Requirement 3 API as Additional Indicator
Elementary School Districts <i>expectations</i>	ELA: 95% Math: 95%	ELA: 46.0 % Math: 47.5%	650 API or 1 point growth until 800
Millbrae School District Met 30 of 33 characteristics of AYP	ELA: 98 % Math: 100 %	ELA: 71.5% Math: 72.1%	API 857

Rates based upon STAR results

Note: Targets increased in 2008-2009.

English Language Arts



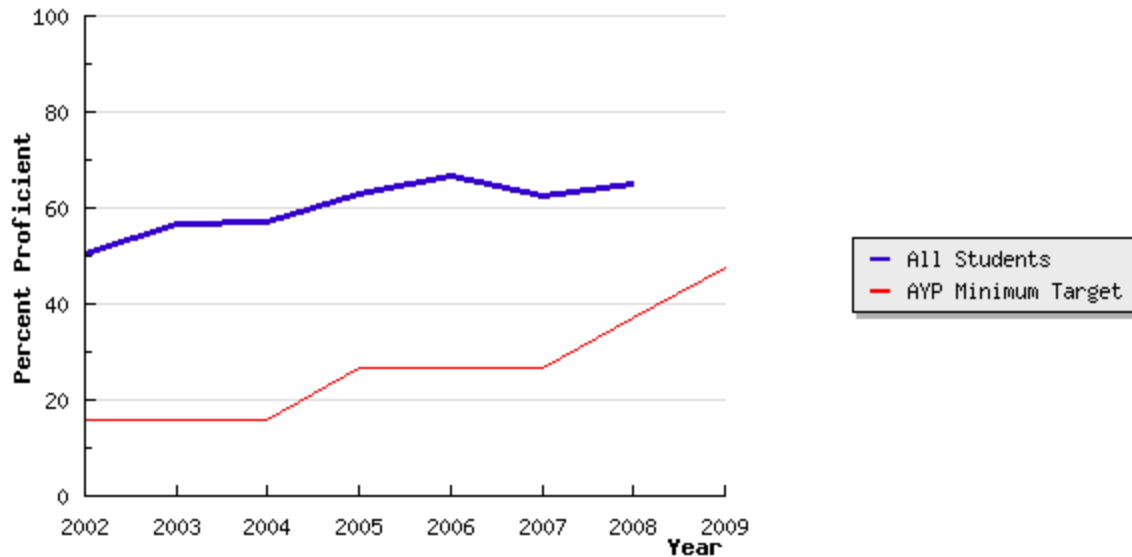
MSD Proficient and Advanced

2008 64.9%

2009 71.5%

[**Year** and Percentage of ALL students]

Math



MSD Proficient and Advanced

2008 64.9%

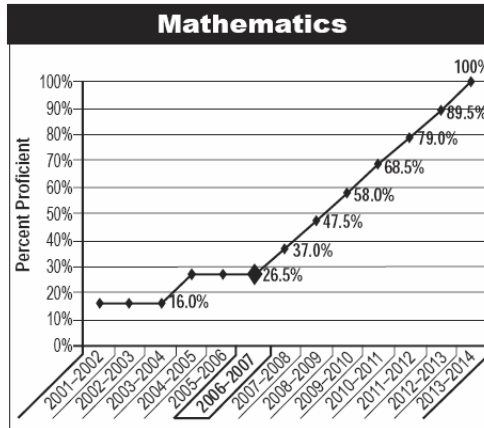
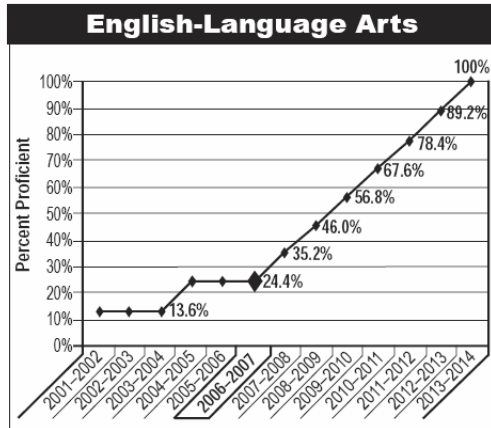
2009 72.1%

[**Year** and Percentage of ALL students]

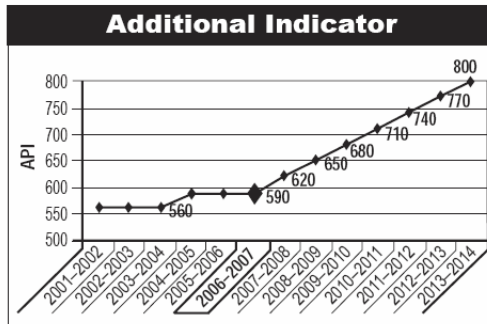
AYP Targets, 2002-2014

Elementary Schools, Middle Schools, and Elementary School Districts

- Participation Rate – 95% (schoolwide/LEA-wide and subgroups)
- Percent Proficient – Annual Measurable Objectives (AMOs)¹ (schoolwide/LEA-wide and subgroups)



- Additional Indicator – Growth in the API of at least one point OR a minimum API score (schoolwide/LEA-wide)



A local educational agency (LEA) is a school district or county office of education.

¹ AMO targets are level at two time intervals between 2002 and 2007 and then increase yearly to 2014. This pattern was established to reflect the expectation that the strongest academic gains in schools and LEAs are likely to occur in later years (after alignment of instruction with state content standards, after schools and LEAs have the opportunity for increased capacity, and after a highly qualified teacher is in every classroom).

AYP Proficiency Targets

2007-2008

English-Language Arts

35.2% (64.9%)

Math

37.0% (64.9%)

2008-2009

English-Language Arts

46.0% (71.5%)

Math

47.5% (72.1%)

2009-2010

English-Language Arts

56.8% ?

Math

58% ?

Additional Indicator - API

650 points (2008-2009)

680 points (2009-2010)

MSD = 836 (2008)

= 857 (2009)

Sources

■ <http://star.cde.ca.gov/star2009>

- <http://www.cde.ca.gov/ta/ac/ay/aypreports.asp>
- <http://www.edresults.org>
- <http://www.jftk-ca.org/>



<http://www.starsamplequestions.org>

School Accountability Report Cards (SARC)

and Fact Sheets

can be obtained from the school office, District Office (by request), or online by selecting the appropriate school name – *Updates in December.*

Millbrae Assessment Report
October, 2009
continues





Testing Results



Physical Fitness *Results* *-2009-*



Millbrae School District Results



Number of Fitness Standards Achieved



Six Standards include:

Aerobic Capacity, refers to the rate that oxygen is taken in and used by the body during exercise. This is measured by the 1 Mile Run or Pacing.

Body Composition, measured by students height and weight

Abdominal Strength and Endurance is measured by the “Curl-Up” or completing as many curl-ups as possible at a specified pace, up to a maximum 75.

Trunk Extension Strength and Flexibility is measured by the trunk lift which measures the lift distance of 12 inches from the floor. The required lift is maintained long enough to allow for the distance measurement.

Upper Body Strength and Endurance is measured by the push up, as many as possible at a specified pace or the Flexed-Arm Hang with students completing a chin up and remaining above a bar for as long as possible.

Flexibility is measured by the distance a student is able to extend their arms toward their toes or beyond. The goal is a distance of 12 inches.

*Fitness Zone = 12-24 (5th grade)
= 18-36 (7th grade)*

Abdominal Strength

▶ Curl-up



*Fitness Zone = 9-12" (5th grade)
= 9-12" (7th grade)*

Trunk Extensor Strength

▶ Trunk Lift



*Fitness Zone = 7-15 (5th grade)
= 10-20 (7th grade)*

Upper Body Strength

▶ 90° Push-up



Flexibility

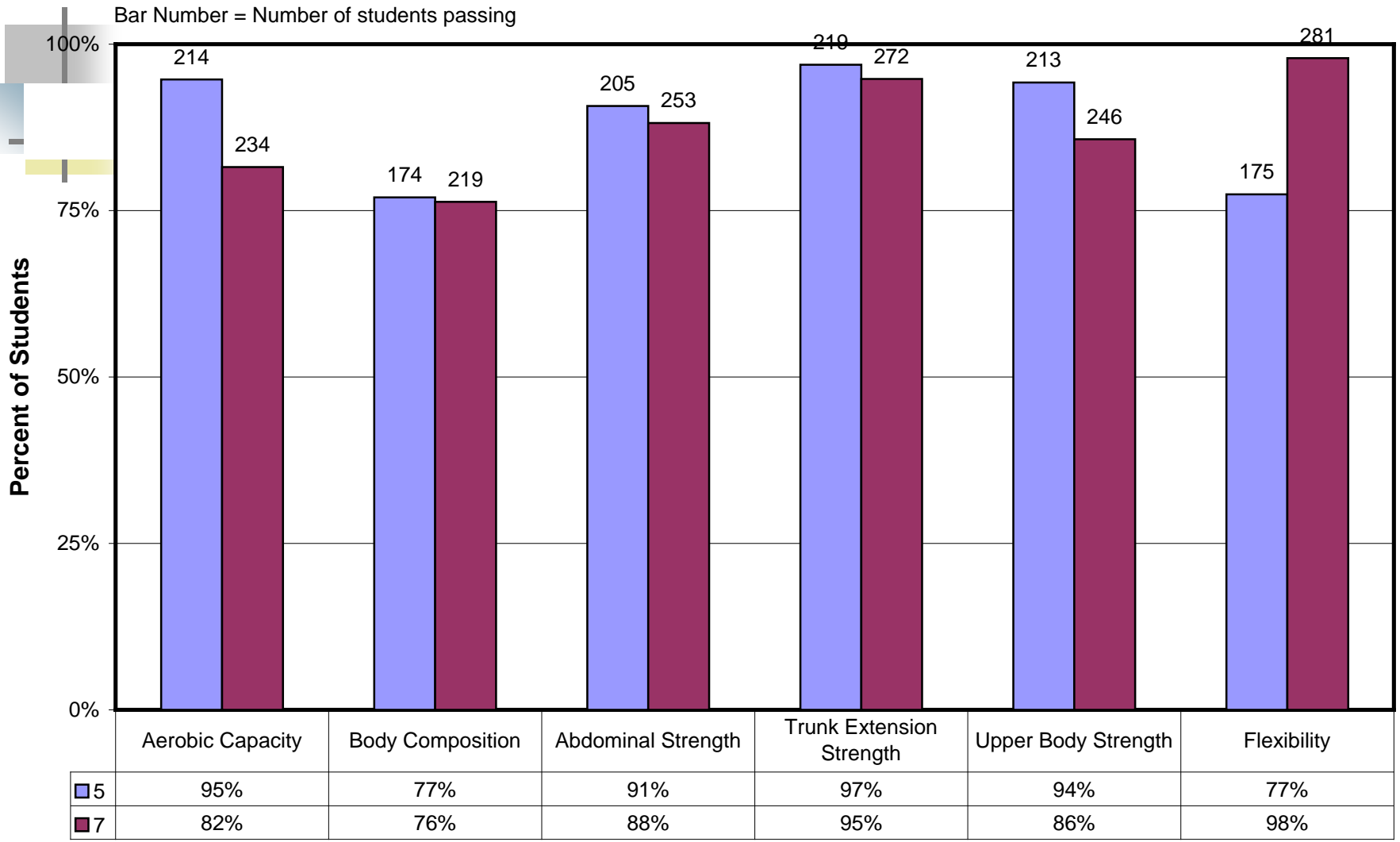
*Fitness Zone = 9" left /9" right (5th grade)
= 10" left /10" right (7th grade)*

▶ Back Saver Sit-and-Reach



- *Displays the percentages of students "within" or "exceeding" the HFZ for each of the six tests.*

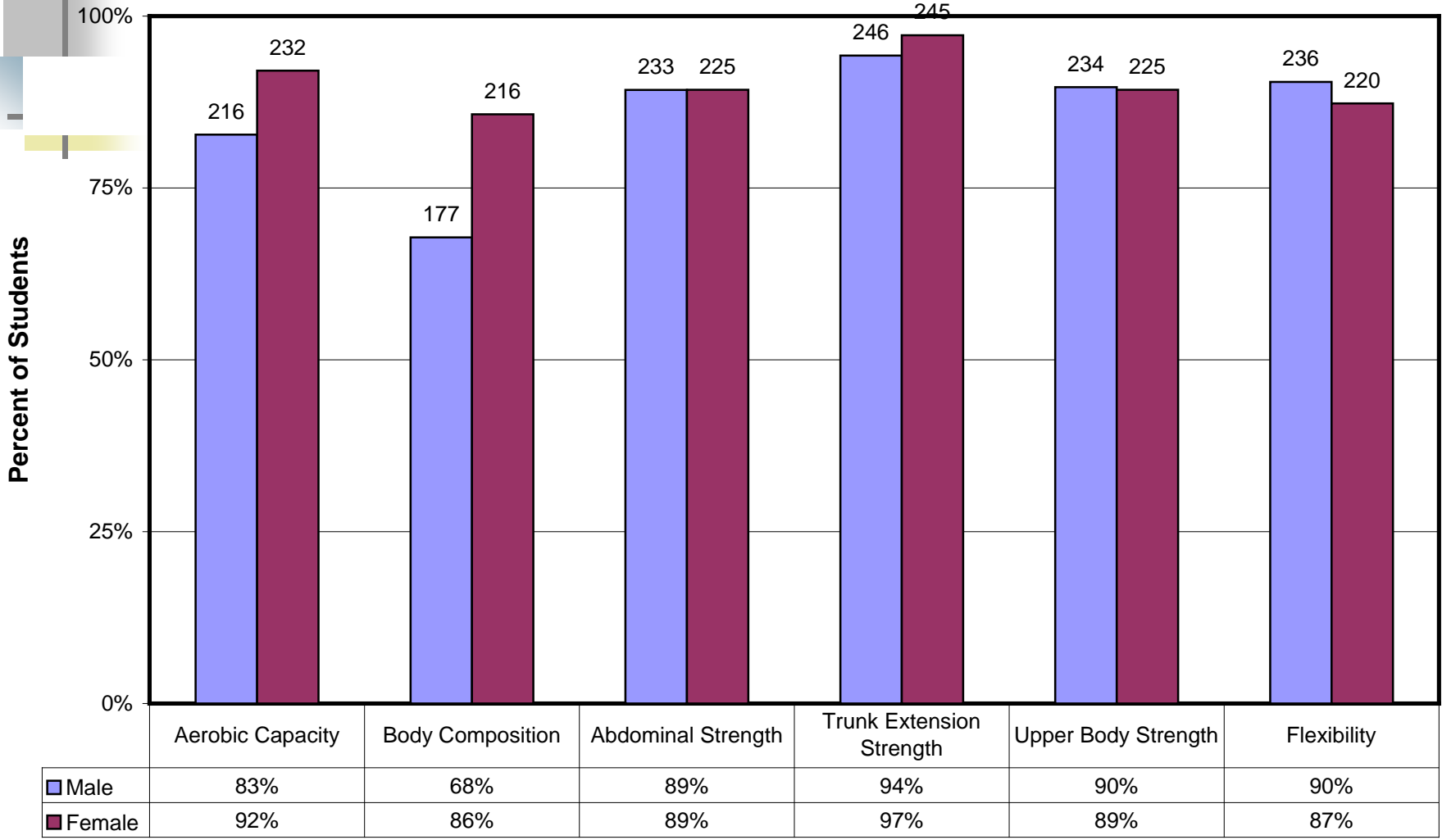
Standards Performance-by Grade



Fitness Tasks

Standards Performance-by Gender

Bar Number = Number of students passing

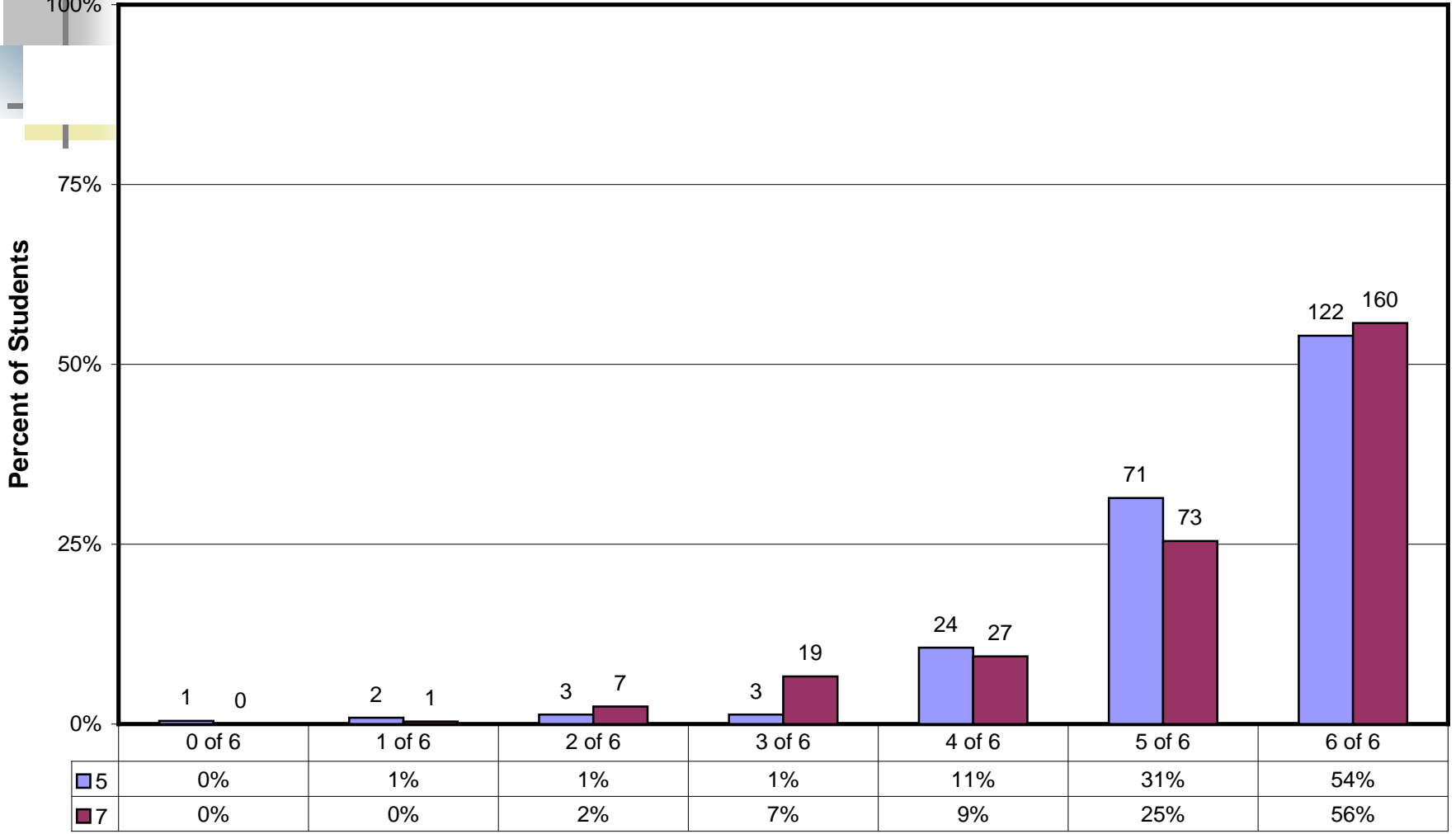


Fitness Tasks

• *Displays the percentages of numbers of standards met.*

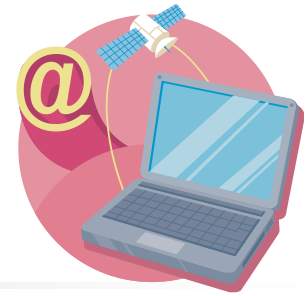
Number of Fitness Standards Achieved-by Grade

Bar Number = Number of students passing



Number of Fitness Standards Achieved

RESOURCES



California Department of Education Web site

<http://www.cde.ca.gov/nr/ne/yr08/yr08rel167.asp>

Data Quest

<http://dq.cde.ca.gov/dataquest/>